

SPACE PLANNING/PROGRAM/  
DESIGN CONCEPT

## DIAGRAMS

### ADJACENCY (BUBBLE) DIAGRAMS

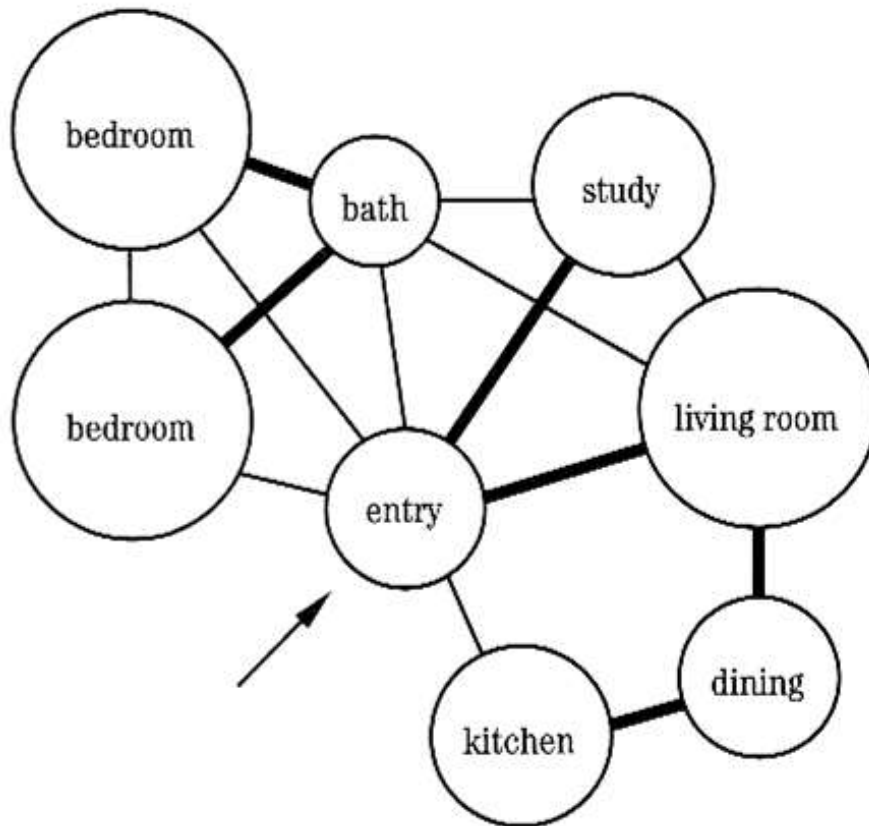
#### ADJACENCY RELATIONSHIPS

PRIMARY

---

SECONDARY

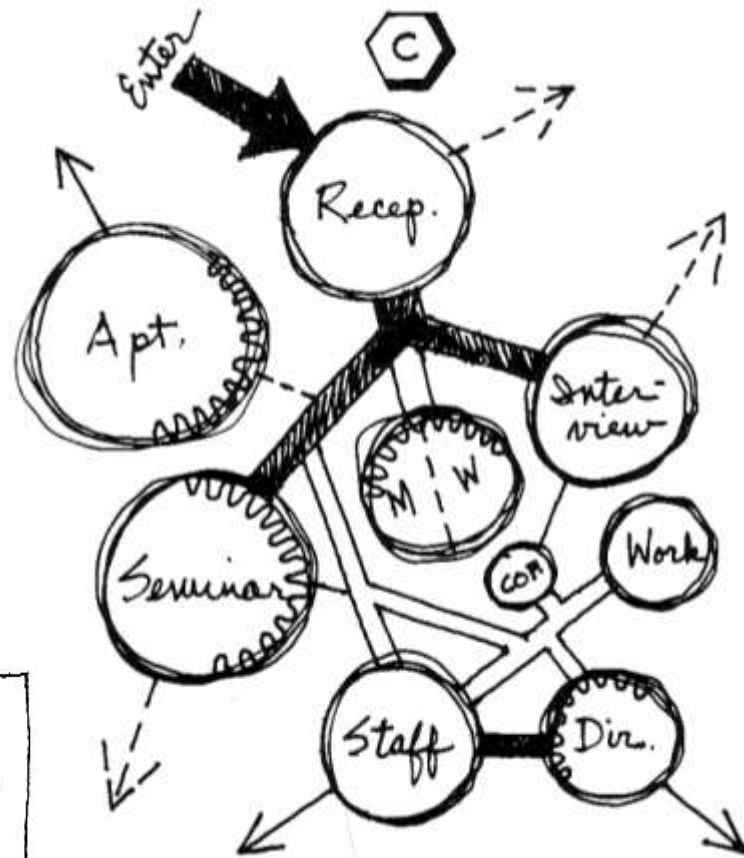
BUBBLE DIAGRAM IS A FREE-STANDING  
PROGRAMMING DIAGRAM, USUALLY NOT PLACE WITHIN  
CONTEXT



**—** mandatory adjacency  
**—** secondary adjacency

## BUBBLE DIAGRAM

(Ballast, 2002)



### LEGEND

- █** = IMMEDIATELY ADJACENT
- ==** = CLOSE + CONVENIENT
- = CONVENIENT
- - -** = MINOR RELATIONSHIP
- ~~~~** = ACOUSTIC PRIVACY
- = NATURAL LIGHT +/OR VIEW

**BUBBLE DIAGRAM**

(Karlen, 1993)

# DIAGRAMS

## PATI DIAGRAMS

---

REPRESENT THE BASIC ORGANIZATIONAL SCHEME –  
**THE BIG IDEA!!**  
EXPRESS THE ESSENCE (**ABSTRACT**) OF THE SOLUTION  
WITHOUT GETTING INTO DETAIL

HELPS ESTABLISH A SOUND AND APPROPRIATE  
APPROACH

# PARTI DIAGRAM

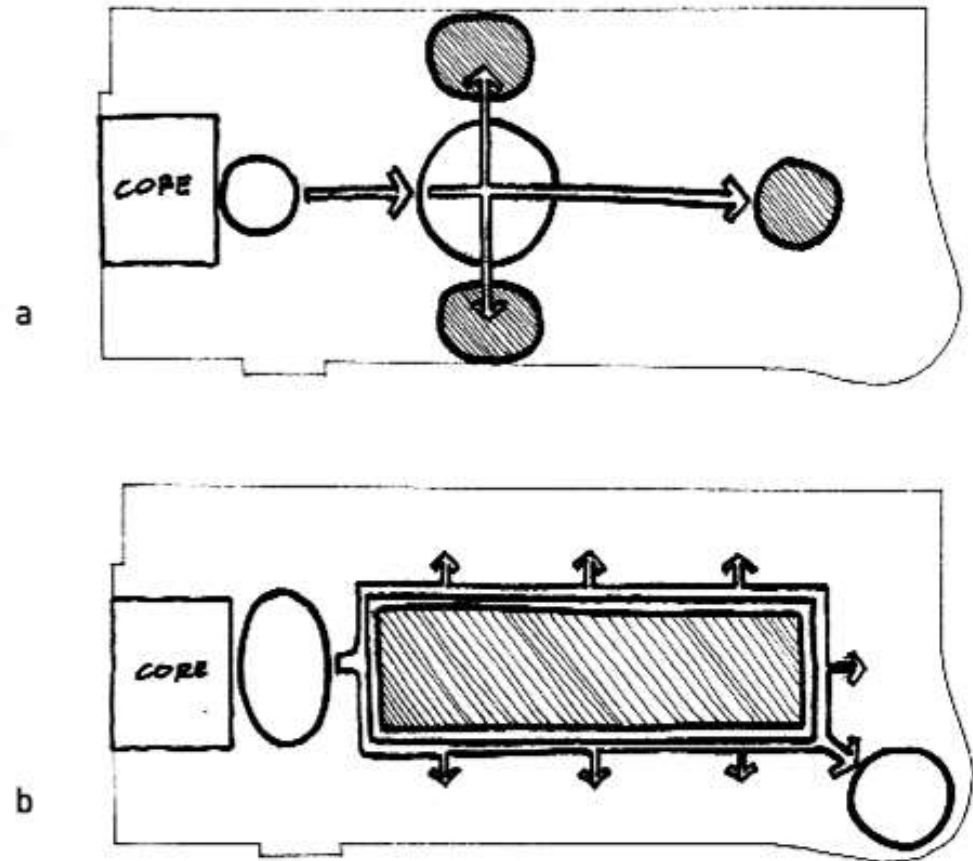


Figure 6.22 Two parti diagrams showing the basic essence of the scheme (arrival point, movement system, basic arrangement, basic geometry, and special destinations).

(Rengel, 2003)

# PARTI DIAGRAM

## WITH COMPONENTS

**DOMAINS** – THE REASON PEOPLE GO THERE

**CENTERS** – SPECIAL ACTIVITY AREAS WITHIN THE DOMAIN

**ARRIVAL SPACE** – PRIMARY POINT OF ENTRY

**PATH** – MAIN PATH(S) – PRIMARY CIRCULATION,  
USUALLY DEFINES ORGANIZATIONAL SCHEME

SECONDARY PATH(S) – HIERARCHY RELATED TO MAIN  
PATH

**NODES** – RELATED TO PATH

- JUNCTION
- ACTIVITY
- LANDMARK

(Rengel, 2003)

# PARTI DIAGRAM

## PROCEDURE

ASSIGN COMPONENTS TO ACTIVITY AREAS

REMOVE ACTUAL ACTIVITY

ABSTRACTLY DEVELOP PARTI DIAGRAMS USING SEVERAL ORGANIZATIONAL SCHEMES:

CENTRALIZED

RADIAL

LINEAR

CLUSTER

GRID OR NOT



RE-ASSIGN ACTUAL ACTIVITY AREAS

EVALUATE WITH CONCEPT STATEMENT GUIDANCE.

TEST THROUGH FUNCTIONAL DIAGRAM - BLOCK DIAGRAM

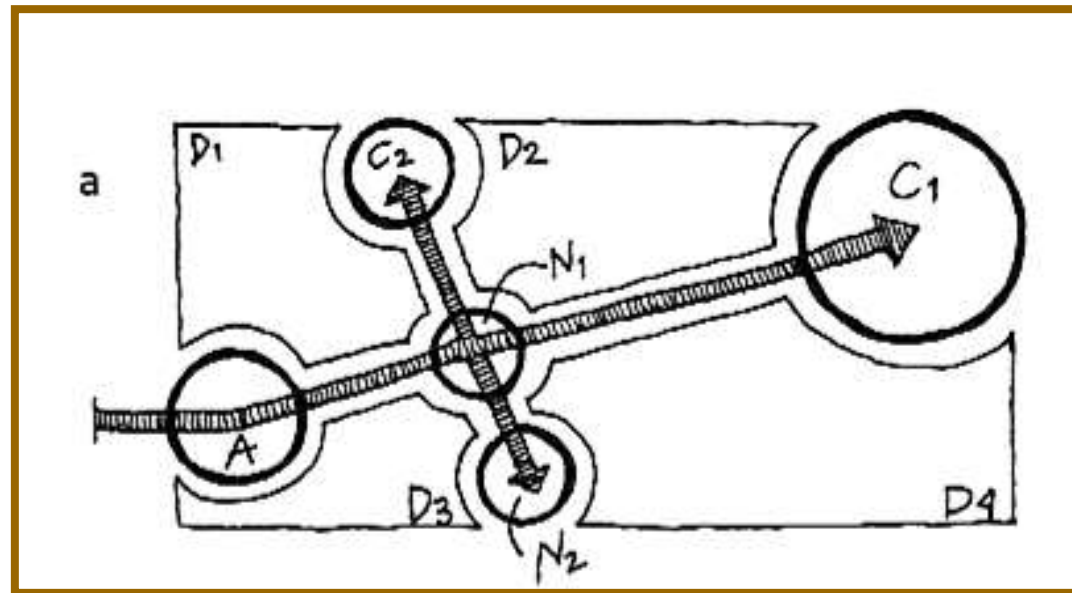
APPLIED TO PARTI.

(Rengel, 2003)

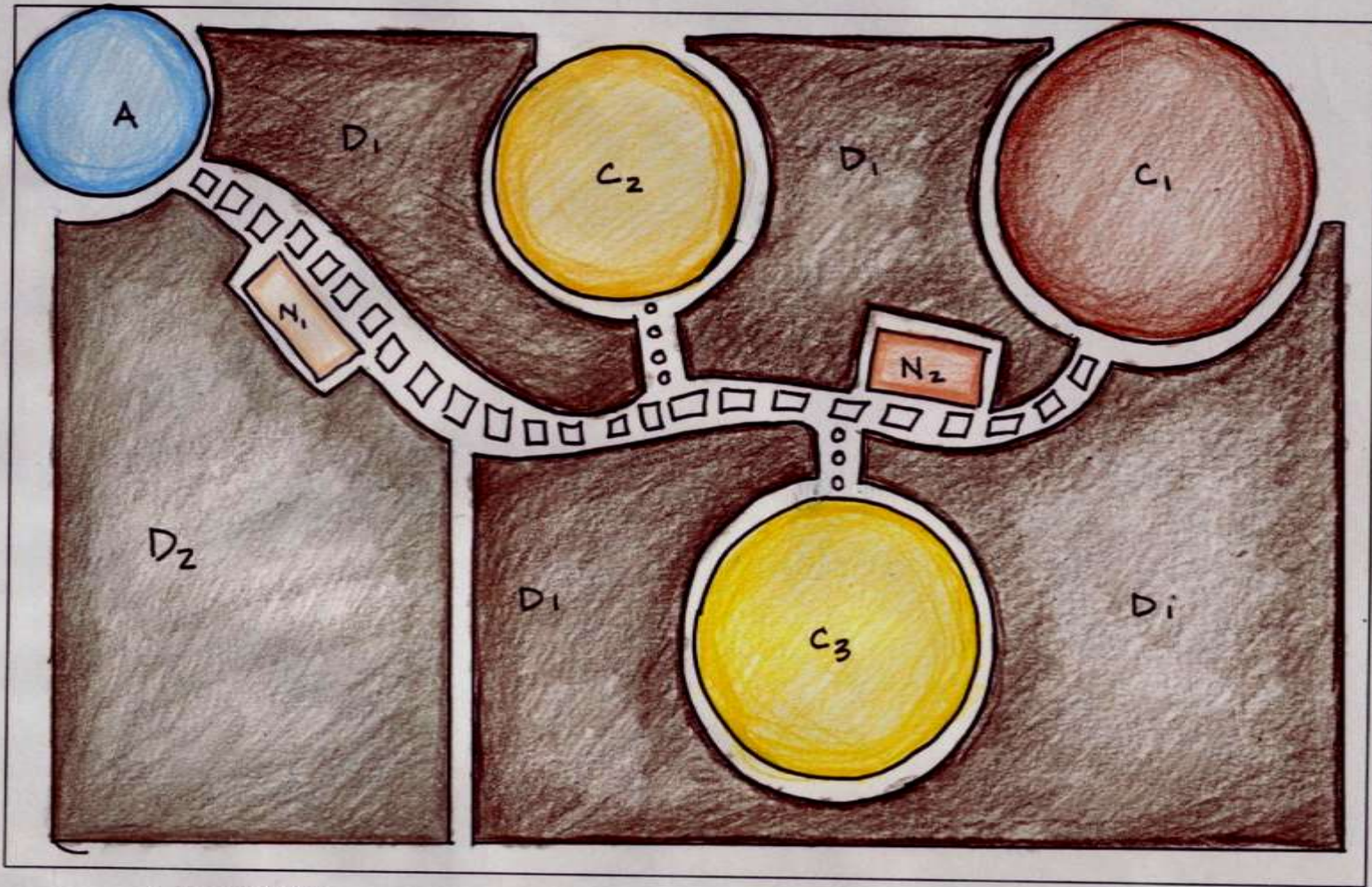
# PARTI DIAGRAM

WITH COMPONENTS

- DOMAINS (D)
- CENTERS (C)
- ARRIVAL SPACE (A)
- MAIN PATH(S)
- SECONDARY PATH(S)
- NODES (N)



(Rengel, 2003)



LEGEND		
ARRIVAL A	BAR C <sub>1</sub>	RESTROOM N <sub>2</sub>
DINING ROOM D <sub>1</sub>	OFFICE C <sub>3</sub>	PRIMARY PATH
KITCHEN D <sub>2</sub>	BREAK ROOM C <sub>2</sub>	SECONDARY PATH
	WAIT AREA N <sub>1</sub>	

## DIAGRAMS

### FUNCTIONAL BLOCK DIAGRAMS

- OUTGROWTH OF THE PARTI DIAGRAM
- THE TEST OF THE PARTI DIAGRAM
- “THE ADDITION OF THE BLOCK DIAGRAM SQ. FT. REQUIREMENTS TO THE PARTI DIAGRAM”

MORE COMPREHENSIVE

SPECIFIC DECISIONS ABOUT PLACEMENT, SIZE, AND RELATIONSHIPS OF FUNCTIONS

FUNCTIONAL DIAGRAMS RESPONDING TO PARTI DIAGRAMS FORCE YOU TO CREATE MEANINGFUL PLACES

# BLOCK DIAGRAM

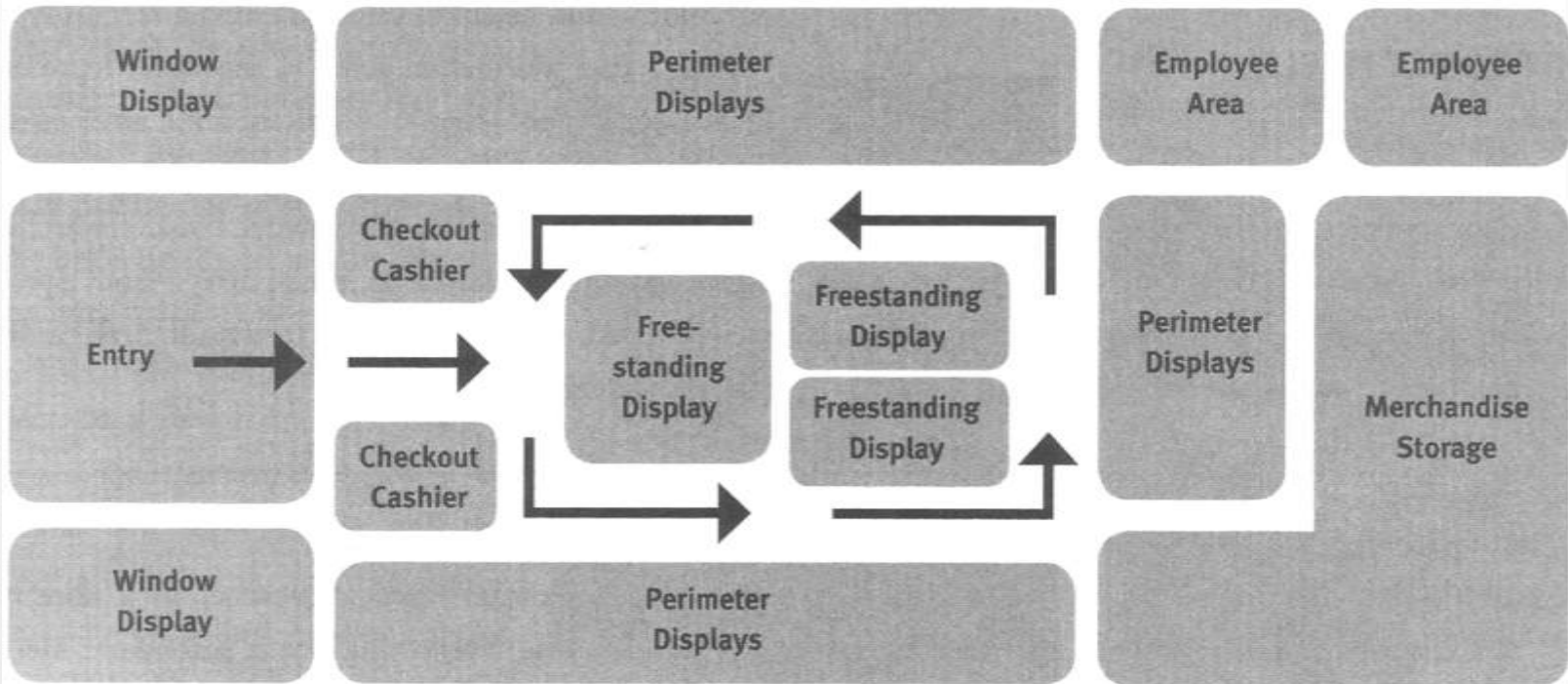
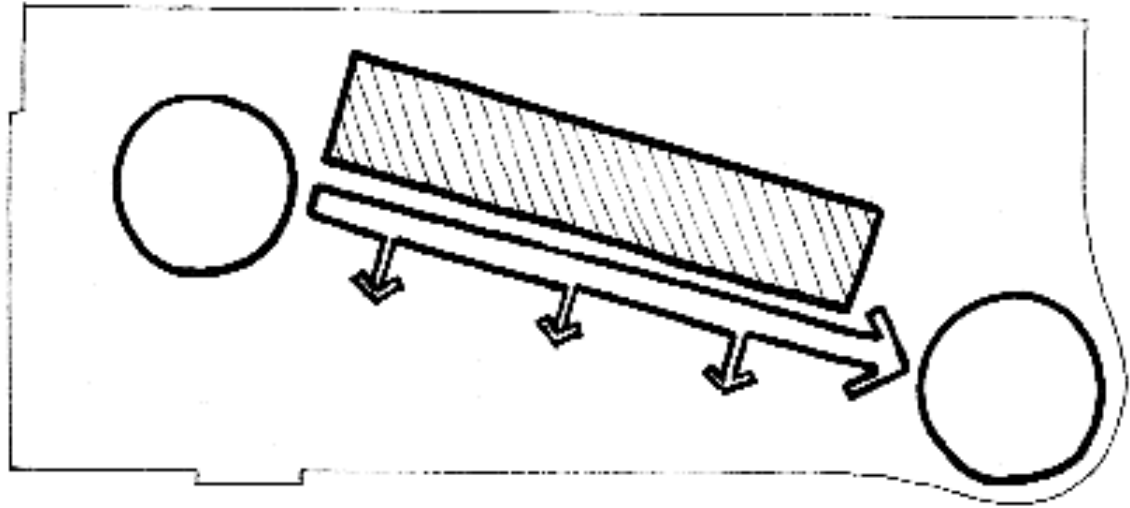
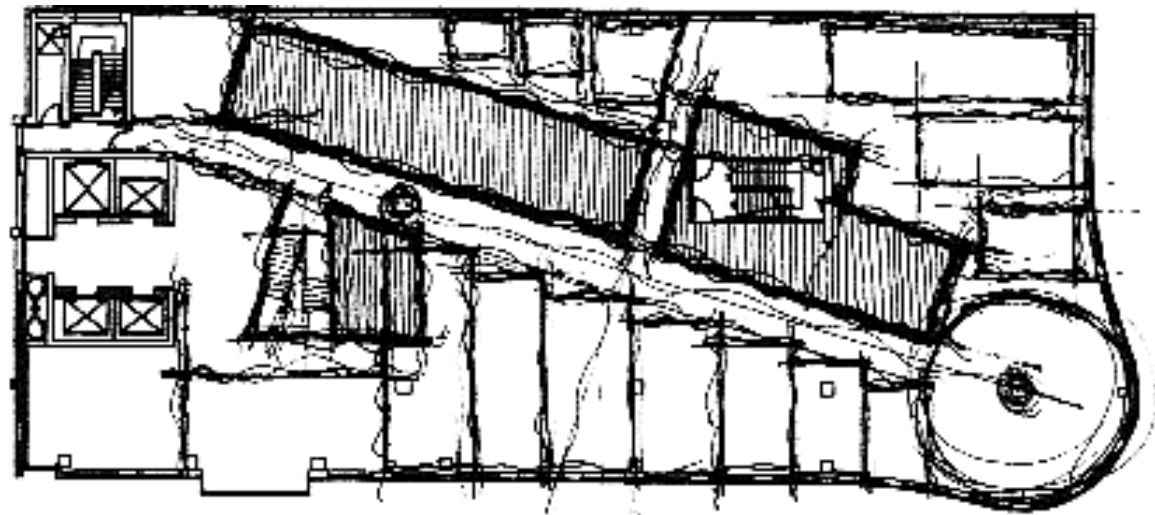


Figure 5.13: The following basic elements are included in this prototypical diagram of a store: window display, entry, checkout/cashier, perimeter displays, freestanding displays, employee areas, and merchandise storage.

**PARTI**  
(WITHOUT  
COMPONENTS)



**FUNCTIONAL**



(Rengel, 2003)

# DIAGRAMS

## GRAPHICS FOR DIAGRAMS

CLARITY OF CONTENT – ALL SPACES SHOWN  
AND DELINEATED CLEARLY

CLARITY OF INTENTION – SO OTHERS MAY  
UNDERSTAND IT

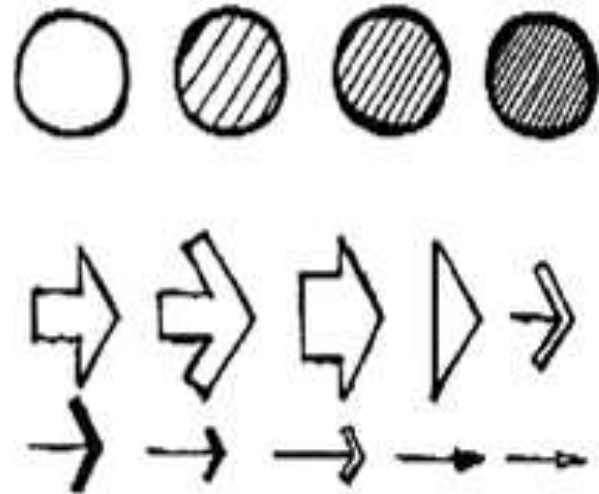
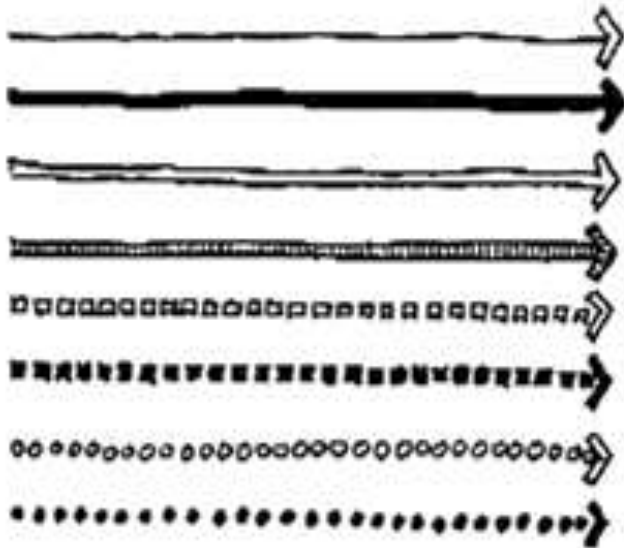
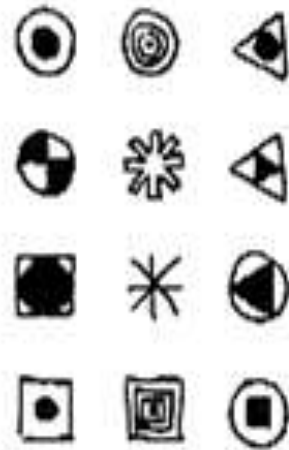
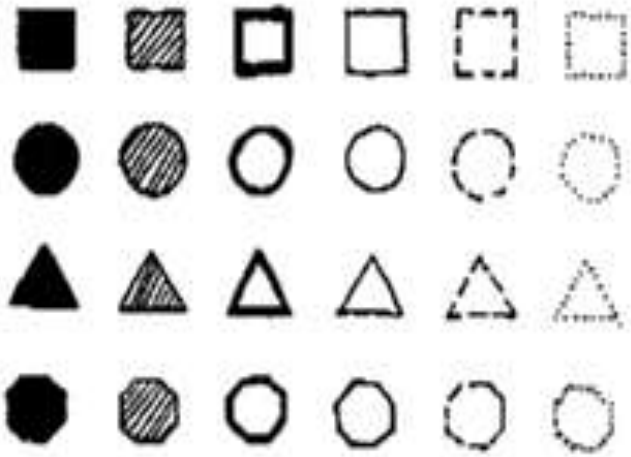
ECONOMY OF MEANS – KEEPING  
INFORMATION SIMPLE

---

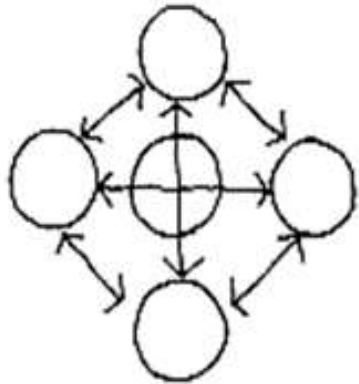
## HIERARCHY DEFINED

### GRAMMAR

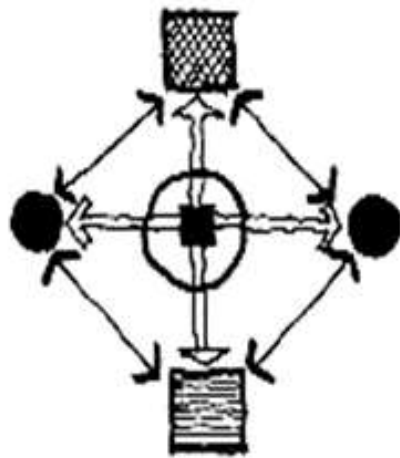
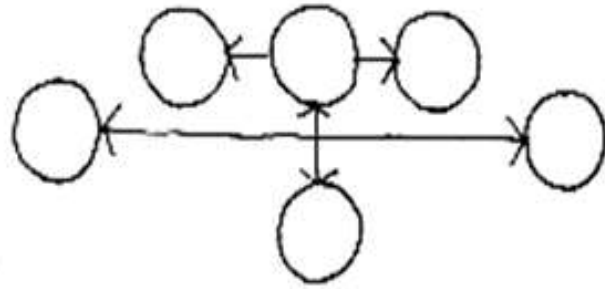
- BUBBLES / RECTILINEAR
- LINES AND ARROWS – CIRCULATION
- SPECIAL “SYMBOLS” TO REPRESENT SPECIAL SPOTS OR EVENTS



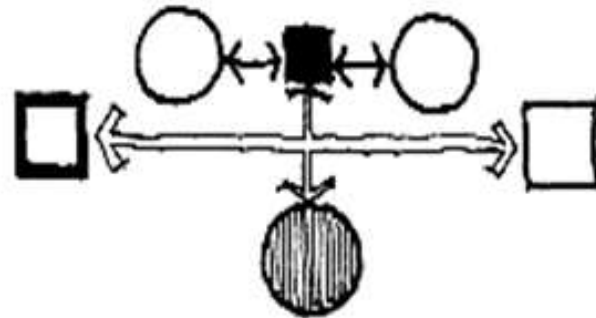
(Rengel, 2003)



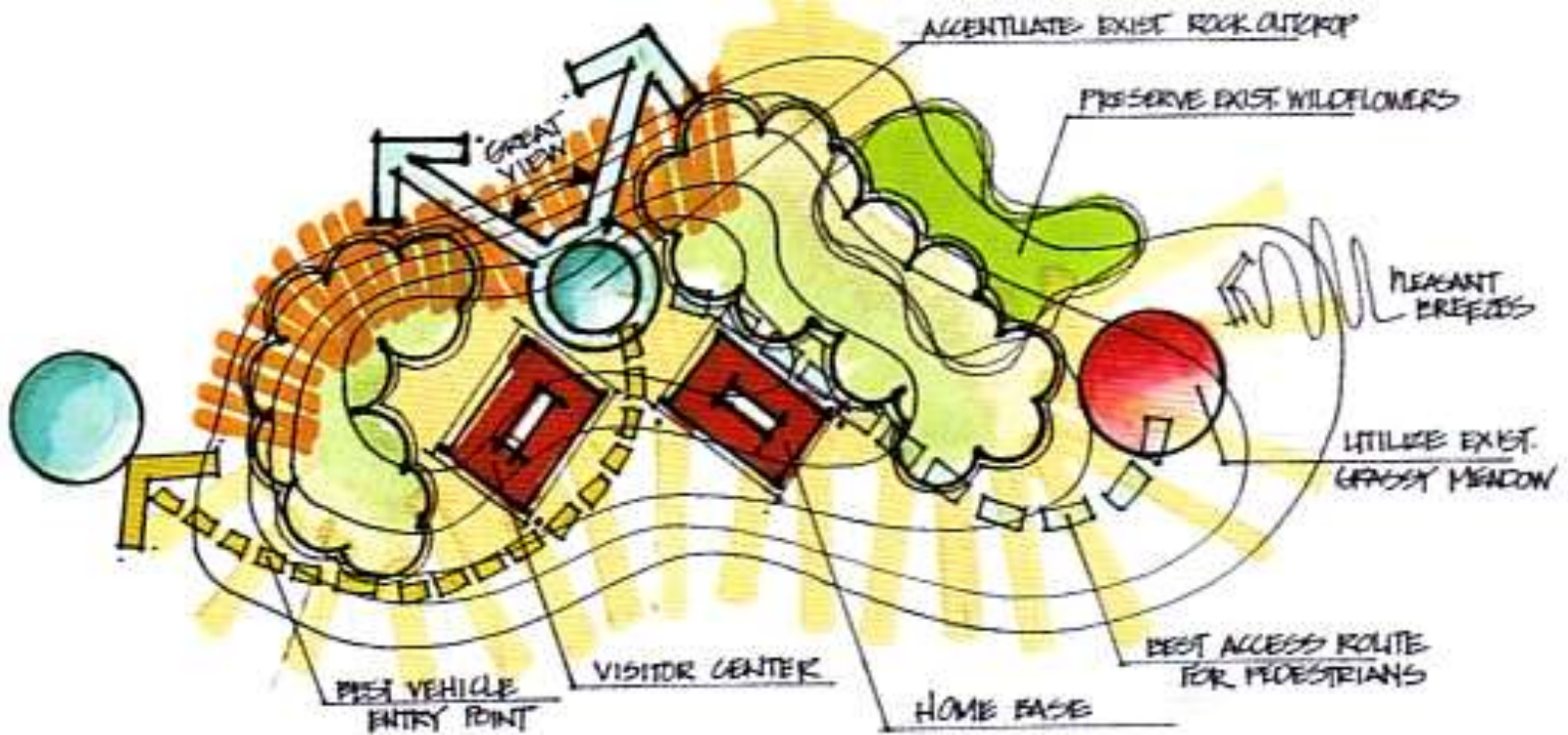
a



b



(Rengel, 2003)



(Lin, 1993)

## PROGRAMMING

THE ANALYSIS OF THE PROGRAM AND PROJECT REQUIREMENTS IS CALLED 'PROGRAMMING'. PROGRAMMING INVOLVES RESEARCH, DATA GATHERING, QUALITATIVE AND QUANTITATIVE ANALYSIS OF USER NEEDS AND SPACES INCLUDING THE SITE.

---

PROGRAMMING SERVES AS THE PRIMARY GUIDE FOR SPACE PLANNING BECAUSE PROGRAMMING DETERMINES THE RANGE OF FUNCTIONS, USE, AND ACTIVITIES AND STANDARDS FOR SPACE ALLOCATION, CONFIGURATION AND LAYOUT (SUCH AS ERGONOMICS, CODES) TO BE USED IN PLANNING. THUS, IT'S THE ANALYSIS PHASE OF DESIGN WHERE THE PARAMETERS OF DESIGN ARE ESTABLISHED.

# PROGRAM ANALYSIS/SPACE DESCRIPTION

## PROGRAMMING

### QUANTITATIVE PROGRAM

#### ED KIOSK Adjacencies

— Primary  
- - - Secondary



The Emergency Department continually strives to advance the patient check-in process with new technologies such as the self-service ED KIOSK. Patients have the option of manually entering in their own information or scanning their Driver's License and the reason for their visit. Once their information is entered into the system, the triage nurse is automatically notified of their arrival.



#### REGISTRATION Adjacencies

— Primary  
- - - Secondary



The registration clerk will obtain information for your medical record, including billing information. The registration clerk will obtain authorization for treatment from your insurance company. Your being seen and treated by the emergency department physician will not be delayed by the registration process or insurance verification. All patients will be medically screened, evaluated and stabilized regardless of insurance or ability to pay.



#### WAITING ROOM AREA Adjacencies

— Primary  
- - - Secondary

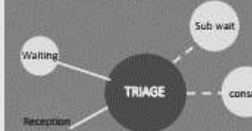


If you are stable, you may have to wait for a bed to become available. You will, however, be made as comfortable as possible while you wait and the staff will keep you advised as to the status of your visit. A convenient Wait Time Monitor is located in the waiting room which shows approximate wait times for each patient.



#### TRIAGE Approx. 260 NSF Adjacencies

— Primary  
- - - Secondary



A triage nurse will assess you upon your arrival and will evaluate your chief complaint and vital signs. Your priority of treatment is based on the severity of your illness, as determined by the triage nurse. You will be seen in order of arrival time unless you are determined to be seriously ill or unstable. Patients who are determined to be emergent will be taken to the treatment area immediately.



CRITERIA MATRIX		FOR: UNIVERSITY CAREER COUNSELING CENTER							
	SP FOOTAGE NEEDS	ADJACENCIES	PUBLIC ACCESS	DAYLIGHT AND/OR VIEW	PRIVACY	PLUMBING	SPECIAL EQUIPMENT	SPECIAL CONSIDERATIONS	
① RECEPTION	250	② ③	H	Y	N	N	N	TRAFFIC HUB ADJ. TO MAIN ENTRANCE	
② INTERVIEW STA. <sup>(4)</sup>	220	① ④	M	I	L	N	N	FEEL LIKE A TEAM OF FOUR	
③ DIRECTOR	140	④	M	Y	H	N	N	HIGHEST IMAGE ACCESS TO REAR DR FOR PRIVATE EXIT	
④ STAFF	180	③	M	Y	M	N	N		
⑤ SEMINAR RM	300	① ⑥ ⑦	H	I	H	N	Y	A/V USE IMPORTANT CLOSE TO ENTRANCE	
⑥ REST ROOM (2)	200	↑ CENTRAL ↓	M	N	H	Y	N		
⑦ WORK AREA	120	② ④ CENTRAL	L	N	M	Y	Y		
⑧ COFFEE STATION	50	CENTRAL	H	Y	N	Y	Y	CONVENIENT FOR EVERYONE	
⑨ GUEST APARTMENT	350	REMOTE	L	Y	H	Y	N	RESIDENTIAL CHARACTER	

### LEGEND

H=HIGH  
M=MEDIUM  
L=LOW  
Y=YES  
N=NO/NONE  
I=IMPORTANT BUT  
NOT REQUIRED

● - IMMEDIATELY  
ADJACENT  
\* - IMPORTANT  
ADJACENCY  
X - REASONABLY  
CONVENIENT  
○ - UNIMPORTANT  
-- REMOTE

TOTAL NEEDED = 1810 S.F.  
2500 S.F. - 625 S.F. = 1875 S.F.

NOTE: IN "ADJACENCIES" COLUMN

TOTAL AVAILABLE = 2500 S.F.  
LESS 25% FOR CIRCULATION = 625 S.F.

① - INDICATES ADJACENCY IMPORTANCE  
② - INDICATES MAJOR ADJACENCY IMPORTANCE

## CONCEPT STATEMENT

A STRONG DESIGN STATEMENT IS SPECIFIC, AND DISCUSSES THE ACTIONS YOU WILL TAKE TO MEET YOUR CLIENT'S NEEDS. YOUR STATEMENT SHOULD INCLUDE BOTH YOUR INTENTIONS AND GOALS FOR THE SPACE AND THE SPECIFIC STRATEGIES YOU'LL USE TO ACCOMPLISH THEM.

---

KEEP THE CONCEPT STATEMENT TO ONE PARAGRAPH CONSISTING OF THREE OR FOUR SENTENCES. THE CONCEPT STATEMENT IS NOT THE COMPLETE PLAN; RATHER THE WORDING IS USED TO EASILY EXPLAIN THE IDEA, THE DESIGN.

# CONCEPT STATEMENT SAMPLES

**MATRAVILLE**  
ADOPTS THE  
CONCEPT OF **LIBRARY**  
**CARVING**  
CREATING SPACES  
AND INSERTING RIGID  
BUILDING INTO  
LANDSCAPE **GRID**  
SYSTEM ALLOWS  
MANIPULATING  
**MATERIALITY**



# CONCEPT STATEMENT SAMPLES

## JAPANESE AIR

OFFICE DESIGN.

### Concept Statement -

Originally Tokyo, the capital of Japan, was the main source of my inspiration for this project. Images of the city's architecture helped me focus on a few key influences: the city's skyline, neon lights, and industrial materials. Tokyo replaces a traditional style in favor of a more westernized feel. Having re-built most the city because of earthquakes, it features an innovative mix of industrial, modern, and futuristic designs. I would like to use these styles as well as the more traditional forms of architecture such as the pagoda as well as the gardens of Kyoto, keeping in mind the elements of shape, line, and color to design a sustainable space that reflects the Japanese society's innovative nature and strong sense

of national identity.

clean  
simple  
modern  
minimalist  
contemporary  
traditional  
innovative  
natural  
eclectic  
dynamic



### CONCEPT IMAGES.



# CONCEPT STATEMENT SAMPLES



## CONCEPT STATEMENT SAMPLES



**MOSAIC**  
at Greenbelt

Hip. Cool. Hot.  
Today's alternative,  
Becomes tomorrow's mainstream.

My space, my world, my rurf, my domain.  
It has an overwhelming view of the Makati skyline.  
Gives me a sense of freedom, of independence.  
I am in control of my destiny, my future.

## CONCEPT STATEMENT SAMPLES



### concept & inspiration:

RAW holistic healing center will be inspired by the life cycle. It will be a space that inspires users to grow and be born again through the harmonization of the mind, body and spirit. The facility will attract people who are trying to better themselves and their overall well being. RAW will allow people to practice optimism and reflect it in their mind and body. The space will resemble a forest post-rain; where everything is exposed, refreshed and vibrant.

## REFERENCES:

Ching, F. D. K. (1996). Architecture: Form, Space, and Order, 2<sup>nd</sup> ed. New York: John Wiley & Sons.

Rengel, R. J. (2003). Shaping Interior Space. New York: Fairchild Publications.

Karlen, M. (1993). Space Planning Basics. New York: Wiley & Sons.

Lin, M. (1993). Drawing and Designing with Confidence: A Syep by Step Guide. New York: Van Nostrand Reinhold.