

ORGANIZATIONAL PARTI DIAGRAM

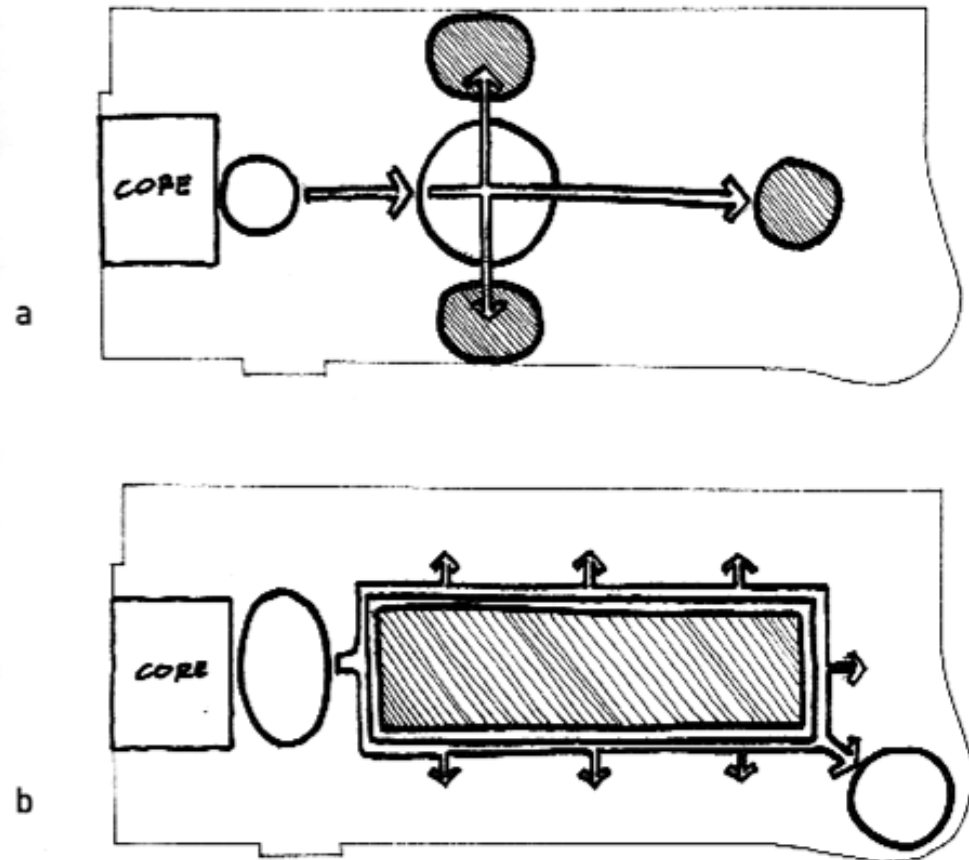


DIAGRAMMING/PARTI

ORGANIZATIONAL DIAGRAM(PARTI)

- ✓ Represents the basic organizational scheme – The big Idea!!
- ✓ Express the essence (abstract) of the solution without getting into detail
- ✓ Helps establish a sound and appropriate approach

ORGANIZATIONAL DIAGRAM



These two organizational diagrams are showing the basic essence of the scheme (arrival point, movement system, basic arrangement, basic geometry. & especial destinations)

(Rengel, 2003)

ORGANIZATIONAL DIAGRAM

With Components

Domains – The reason people go there

Centers – Special activity areas within the domain

Arrival Space – Primary point of entry

Path

Main Path(s) – Primary circulation, usually defines organizational scheme

Secondary Path(s) – Hierarchy related to main path

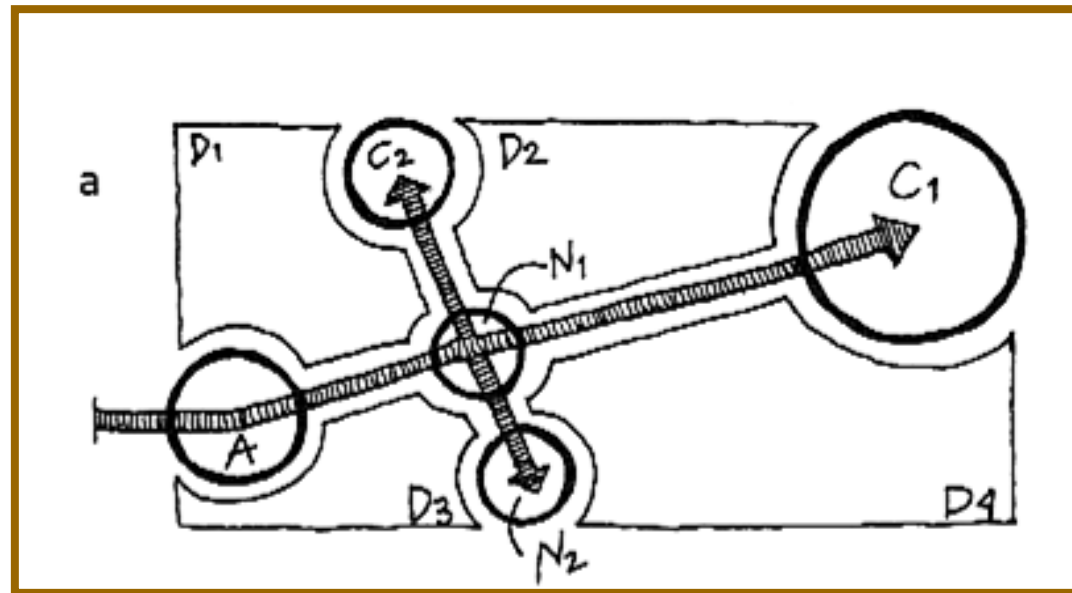
Nodes — Related to path

- Junction
- Activity
- Landmark

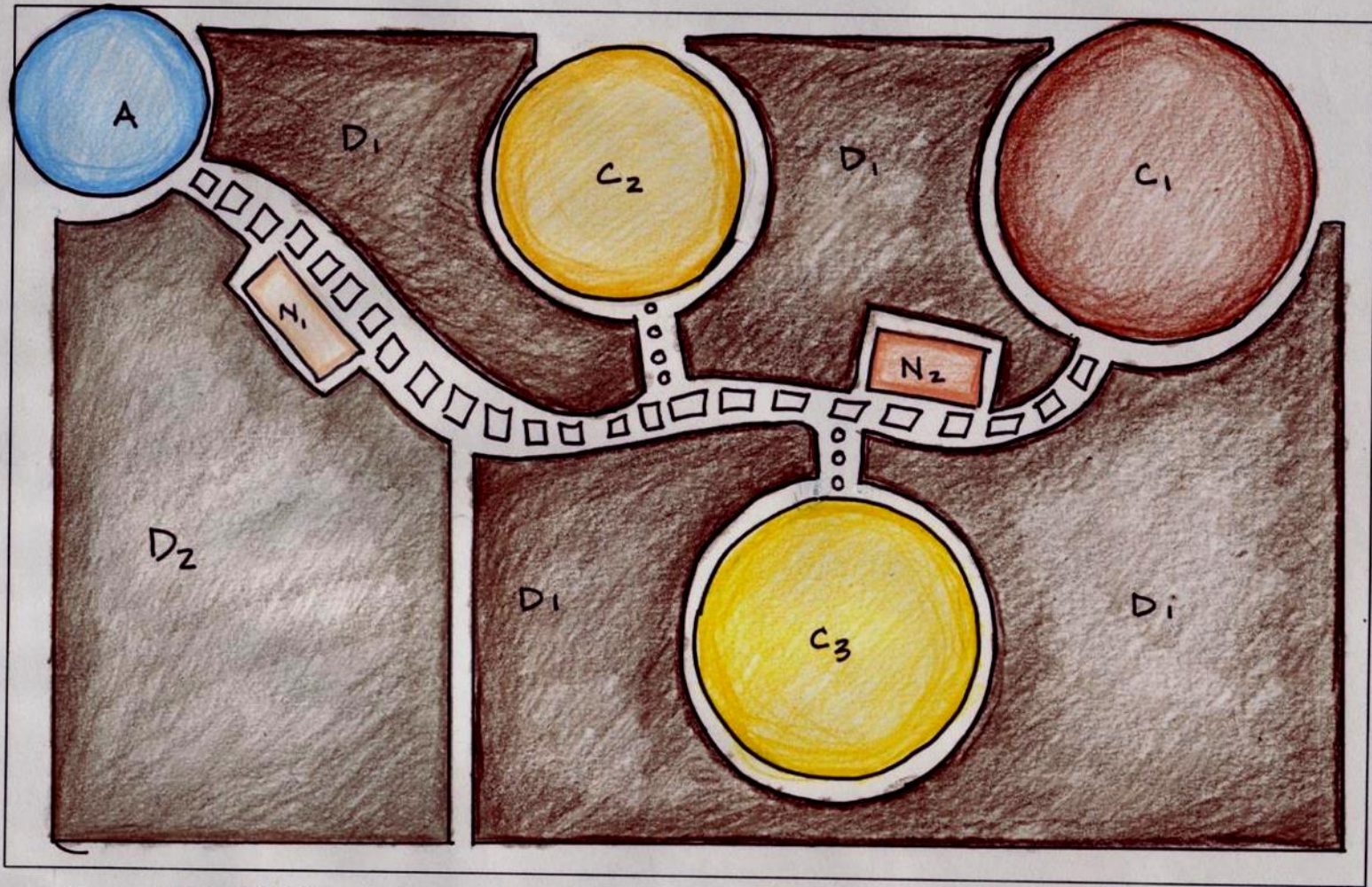
ORGANIZATIONAL DIAGRAM

With Components

DOMAINS (D)
CENTERS (C)
ARRIVAL SPACE (A)
MAIN PATH(S)
SECONDARY PATH(S)
NODES (N)



(Rengel, 2003)

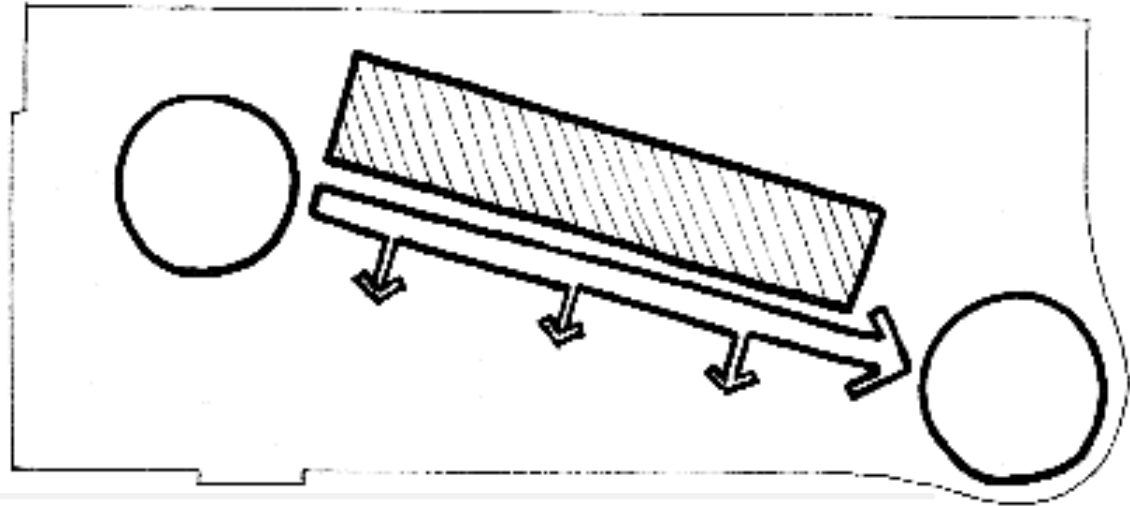


LEGEND		
	ARRIVAL	A
	DINING ROOM	D ₁
	KITCHEN	D ₂
	BAR	C ₁
	OFFICE	C ₃
	BREAK ROOM	C ₂
	WAIT AREA	N ₁
	RESTROOM	N ₂
	PRIMARY PATH	
	SECONDARY PATH	

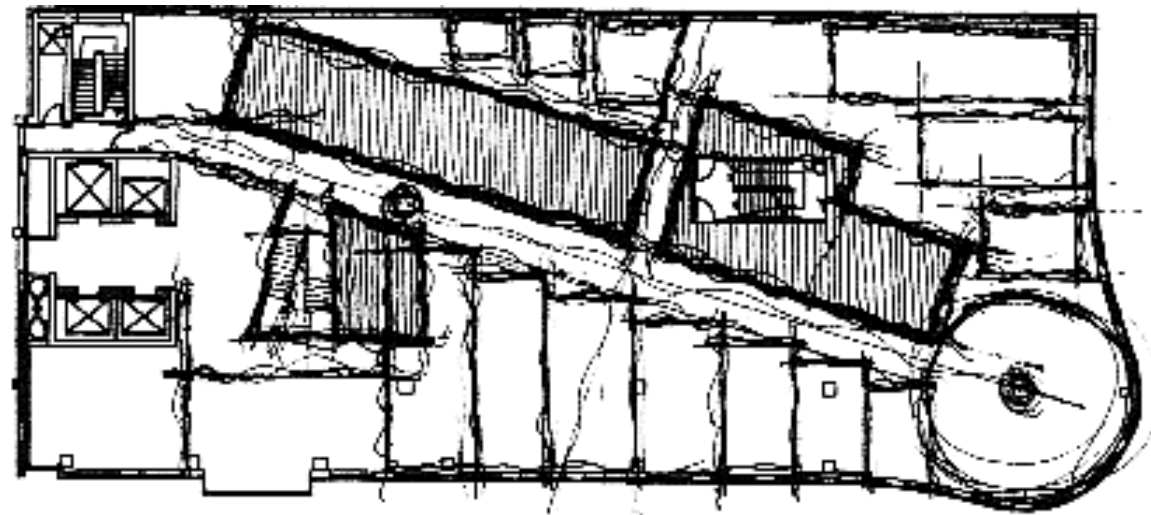
ORGANIZATIONAL

(Without
Components)

VS



FUNCTIONAL



(Rengel, 2003)

REFERENCES:

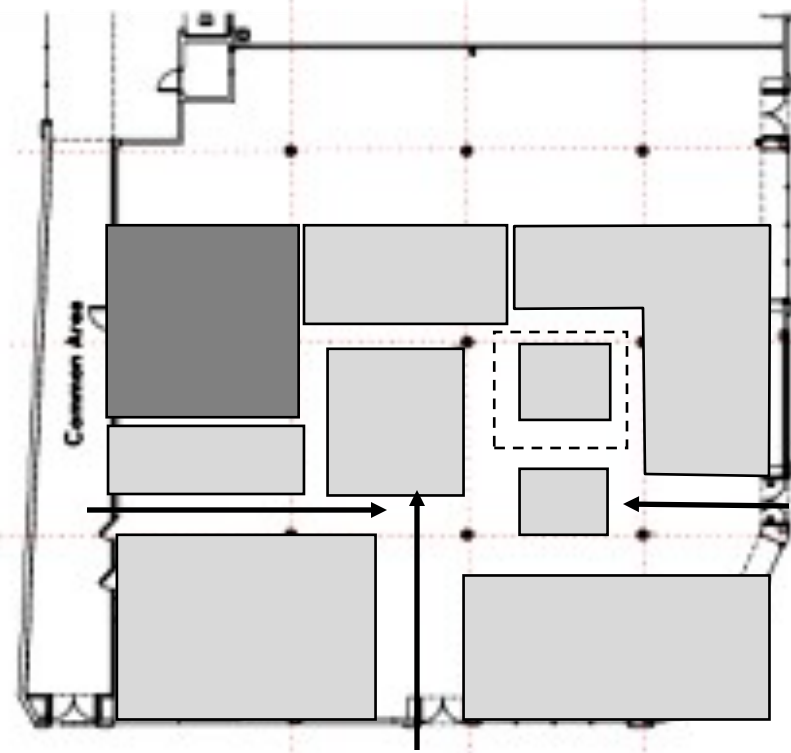
Ching, F. D. K. (1996). Architecture: Form, Space, and Order, 2nd ed. New York: John Wiley & Sons.

Rengel, R. J. (2003). Shaping Interior Space. New York: Fairchild Publications.

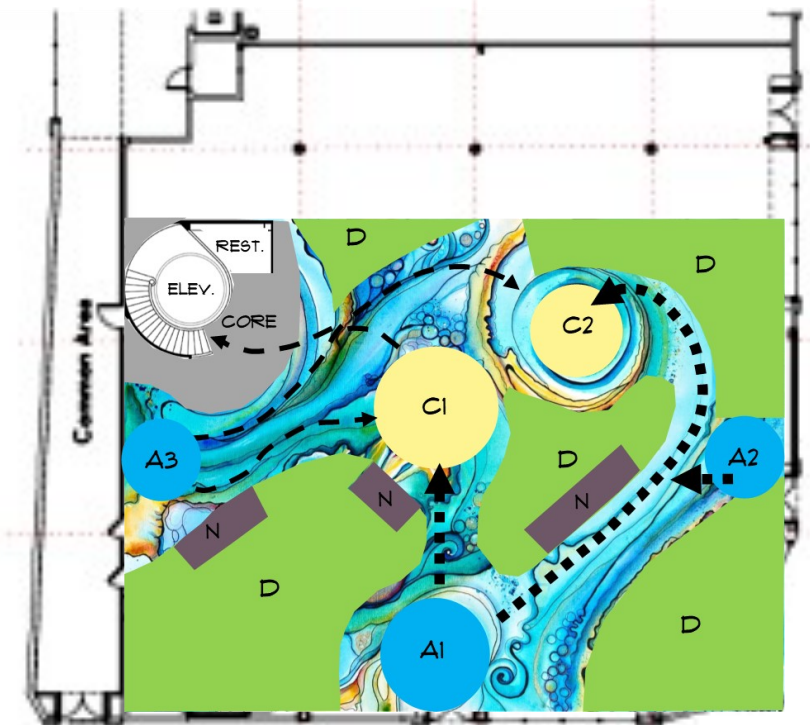
Karlen, M. (1993). Space Planning Basics. New York: Wiley & Sons.

Lin, M. (1993). Drawing and Designing with Confidence: A Syep by Step Guide. New York: Van Nostrand Reinhold.

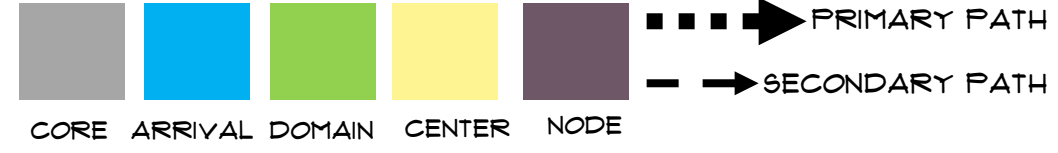
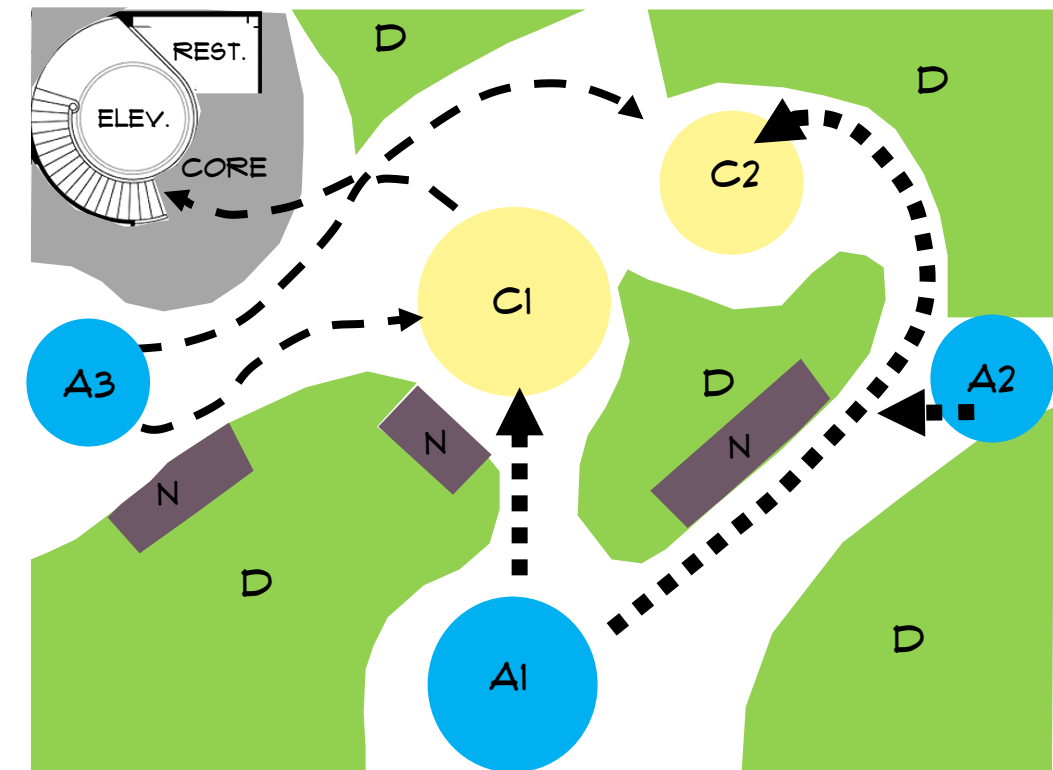
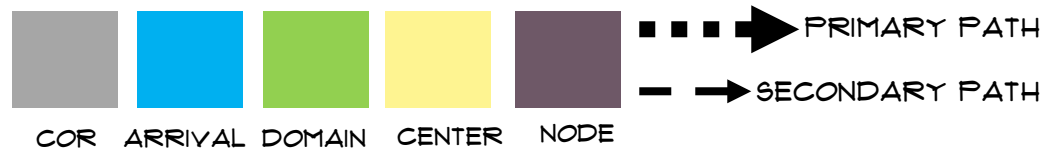
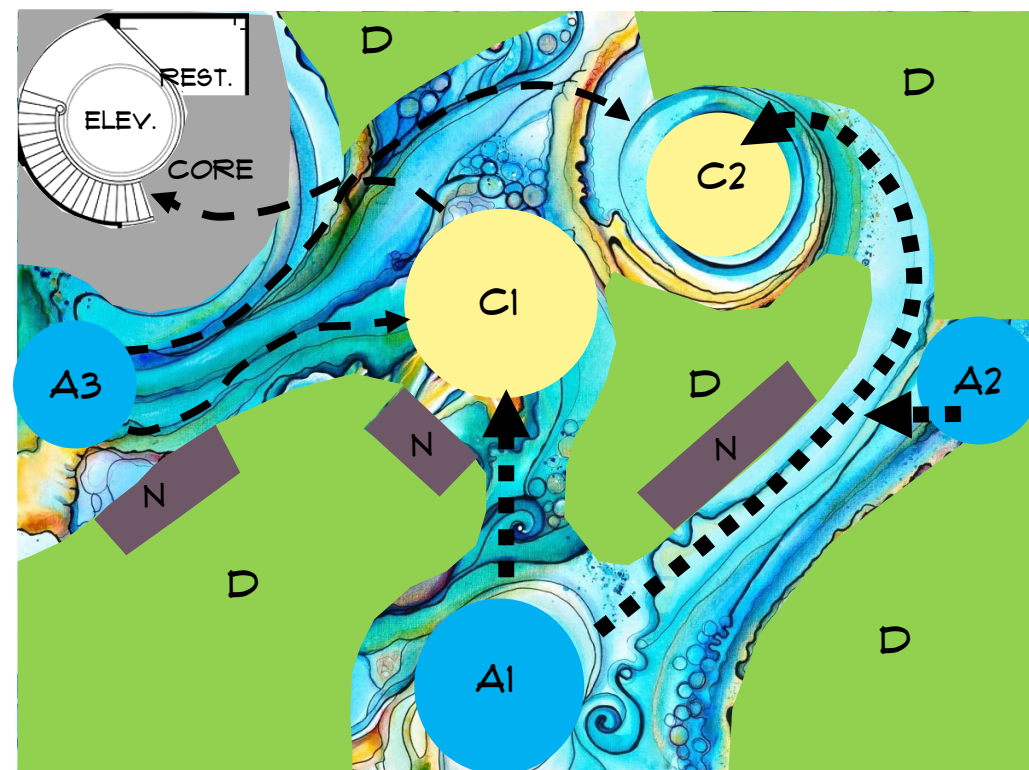
PARTI



FIRST FLOOR



FIRST FLOOR



BERNARD SÉJOURNÉ
ACADEMIE DES BEAUX-ARTS
IN PORT-AU-PRINCE